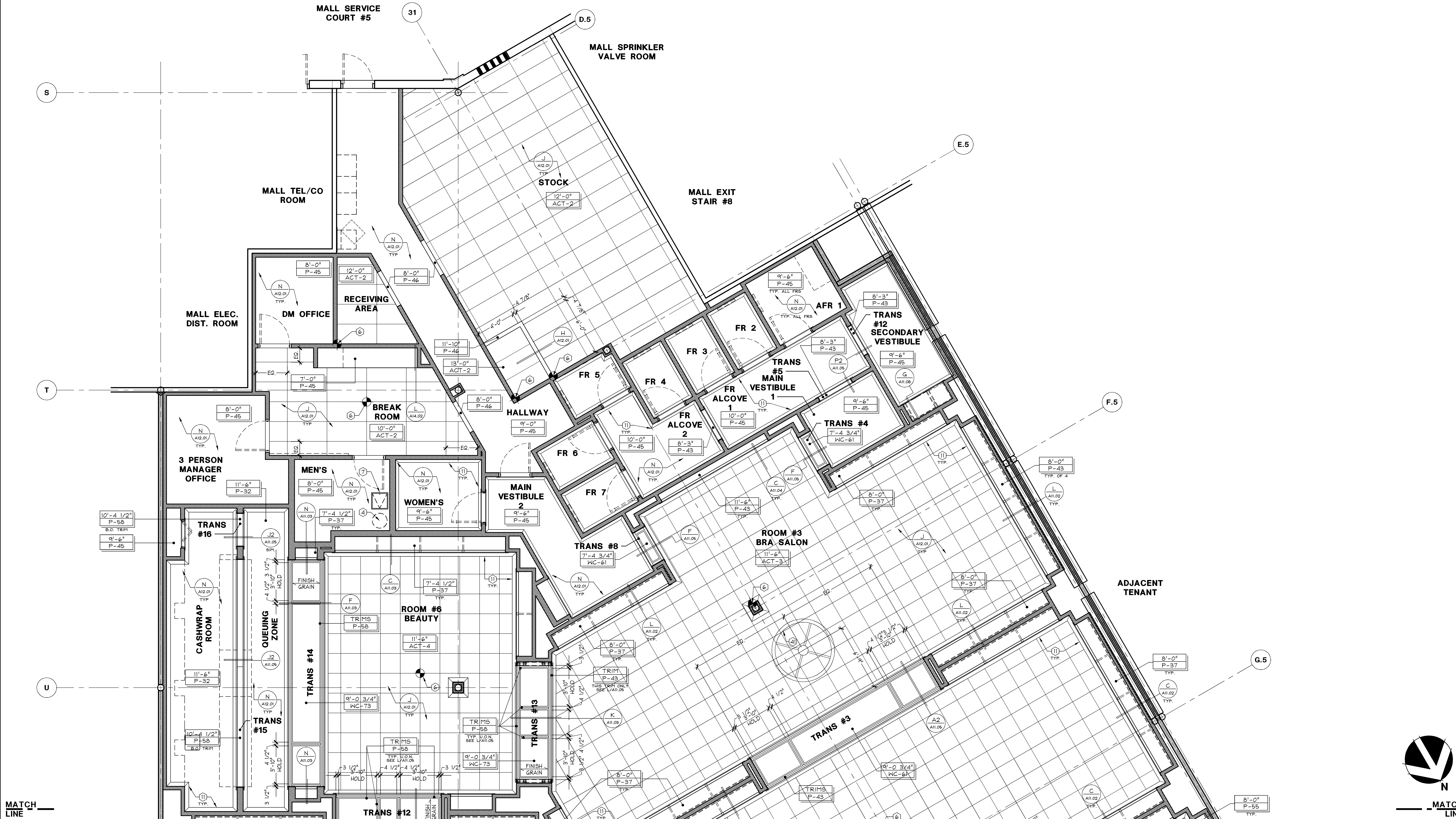


GENERAL	PINK
① ROLLING GRILLE MOTOR ABOVE	② MARKETING PIPE RAIL, REFER TO DETAIL P/A10.01, G.C. TO PAINT <span style="border: 1px solid black; padding: 0 2px;">P-64</span>
③ LEDGE ABOVE - SEE DETAIL G/A12.01 AND STRUCTURAL DRAWINGS FOR DETAILS	③ NOT USED
④ BLOCKING ABOVE CEILING	③ LINE OF PKF-64 CROWN.
⑤ SEE STRUCTURAL DRAWINGS FOR WATER HEATER SUPPORT	③ LINE OF PKF-65 CROWN.
⑥ NOT USED	③ DROP IN TRIMLESS ACCESS PANEL INSTALLED IN UNDERSIDE OF CABINET CEILING FOR NEON SIGNAGE EQUIPMENT ACCESS.
⑦ START POINT OF CEILING TILE. CENTER IN ROOM U.O.N.	③ LOCATION OF DROP-IN TRIMLESS ACCESS PANEL FOR ACCESS TO ROLLING GRILLE EQUIPMENT ABOVE. PANEL TO BE 12"x12", COORDINATE WITH MEP PLANS. REFER TO DETAIL G/A12.01 AND SPECIFICATIONS SECTION 083100
⑧ LOCATION OF FLUSH MOUNTED METAL ACCESS PANEL FOR EQUIPMENT ABOVE (FOR NON-PUBLIC AREAS). PANEL TO BE 24"x24" (18"x18" MIN. ACCEPTABLE SIZE PER FIELD CONDITIONS). COORDINATE WITH MEP PLANS. REFER TO DETAIL N/A12.01 AND SPECIFICATIONS SECTION 083100	VSL
⑨ LOCATION OF DROP-IN TRIMLESS ACCESS PANEL FOR EQUIPMENT ABOVE (FOR PUBLIC AREAS). PANEL TO BE 24"x24" (18"x18" MIN. ACCEPTABLE SIZE PER FIELD CONDITIONS). COORDINATE WITH MEP PLANS. REFER TO DETAIL G/A12.01 AND SPECIFICATIONS SECTION 083100	④ LINE OF DRUM SHADE AT CEILING ATTACHMENT.
⑩ ACCESS PANEL TO BE INSTALLED ON FACE OF POOL HALL FOR ACCESS TO WATER HEATER BEYOND. PANEL TO BE 24"x24" (18"x18" MIN. ACCEPTABLE SIZE PER FIELD CONDITIONS). REFER TO DETAIL N/A12.01 AND SPECIFICATIONS SECTION 083100	④ NOT USED
⑪ RETURN AIR DIFFUSER ON LIFT-OUT FRAME TO BE USED FOR ACCESS. COORDINATE W/MEP PLANS.	④ FINISH PANEL MATERIAL SEAM LOCATION, G.C. TO PAINT SURFACE UNDERNEATH <span style="border: 1px solid black; padding: 0 2px;">P-33</span>
⑫ LINE OF CROWN.	④ 18" DEEP MARKETING GRID - SEE PLAN ON SHEET A08.01
	④ CEILING MOUNTED CURTAIN TRACK - SEE SECTIONS FOR MOUNTING LOCATION
	④ ACT CEILING TO BE INSTALLED IN STOREFRONT VOID SPACES
	④ NOT USED

REFER TO SHEET A00.04 FOR  
GENERAL NOTES.  
REFER TO SHEET A00.03 FOR  
FINISH SCHEDULE.

REFLECTED CEILING PLAN KEYNOTES

D



REFLECTED CEILING PLAN

1/4" = 1'-0"

A

010500587

VICTORIA'S SECRET  
NORTH POINT MALL  
SPACE 14050  
1000 NORTH POINT CIRCLE  
ALPHARETTA, GA 30022  
PROJECT INFORMATION:  
FULL REMODEL | PACKAGE: N/A  
DESIGN TYPE: LS&C  
REVISIONS:  
DATE: 09/19/14  
DESIGNED BY: CN  
DRAWN BY: MJN  
CHECKED BY: JM/SKM  
DRAWING NUMBER:  
A03.02

REVISIONS:  
DATE: 09/19/14  
DESIGNED BY: CN  
DRAWN BY: MJN  
CHECKED BY: JM/SKM  
DRAWING NUMBER:  
A03.02

DATE ISSUED: 09/19/14  
DESIGNED BY: CN  
DRAWN BY: MJN  
CHECKED BY: JM/SKM

REFLECTED  
CEILING PLAN

DRAWING NUMBER:

A03.02